

Key	Description
1	Top cover
2	Filter specification label
3	Seal ring
4	Filter
5	Lower shell

INSTALLATION AND USE

Preparation: Check whether the filter and accessories are complete and undamaged, and confirm that the installation position meets the design requirements.

Installation of the filter: Fix the filter on the suction pipe between the water tank and the pump through the threaded inserts and mounting bolts. Make sure the connection is tight and leak-free.

Connecting pipes: Connect the water inlet and outlet pipes according to the actual need and make sure the pipes are free from obstruction.

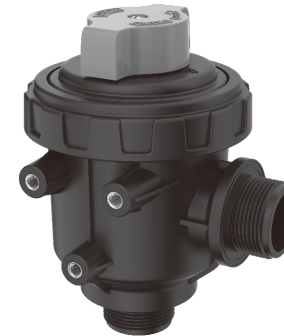
Inspection and debugging: After the installation is completed, carry out a comprehensive inspection of the system to ensure that the filter works normally. Adjust the mesh number of the filter element as needed to meet the filtration requirements.

CAUTION

- Do not use fluids or chemicals that are not compatible with the filter material.
- Regularly check the installation connections of the filter for looseness or leakage.
- Avoid installing the filter in direct sunlight or high-temperature environment to avoid affecting its service life.

indflo

Agricultural Filters Manual



AGF001



AGF002



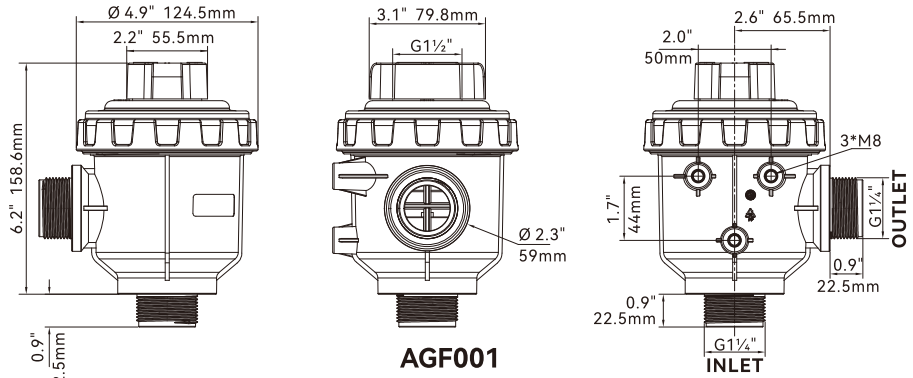
AGF003

Designed specially designed for between water tank and pump, effectively intercepting large particles and protecting the system. Easy to install, adapt to a variety of installation scenarios. Detachable design for easy cleaning and maintenance. Provide a variety of filter elements to meet different filtration needs. Adopting high quality corrosion-resistant materials to ensure stable and reliable operation in various working environments, improve system performance and prolong equipment life.

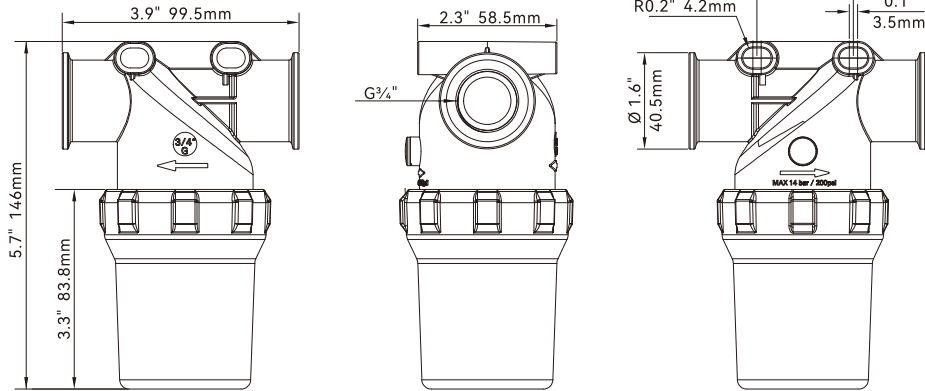
CONFIGURATION

Model	Name	Filter specifications	Flow Rate	Maximum Pressure Capacity	Effective Area (cm ²)	Interface Specifications
AGF001R	Agricultural Filters 01	32mesh	120LPM	150PSI	86	G 1¼"
AGF001B		50mesh	120LPM	150PSI	79	G 1¼"
AGF001Y		80mesh	120LPM	150PSI	72	G 1¼"
AGF001G		100mesh	120LPM	150PSI	76	G 1¼"
AGF002R	Agricultural Filters 02	32mesh	80-100LPM	200PSI	30	G ¾"
AGF002B		50mesh	80-100LPM	200PSI	28	G ¾"
AGF002Y		80mesh	80-100LPM	200PSI	30	G ¾"
AGF002G		100mesh	80-100LPM	200PSI	25	G ¾"
AGF003R	Agricultural Filters 03	32mesh	80-100LPM	200PSI	30	G ½"
AGF003B		50mesh	80-100LPM	200PSI	28	G ½"
AGF003Y		80mesh	80-100LPM	200PSI	30	G ½"
AGF003G		100mesh	80-100LPM	200PSI	25	G ½"

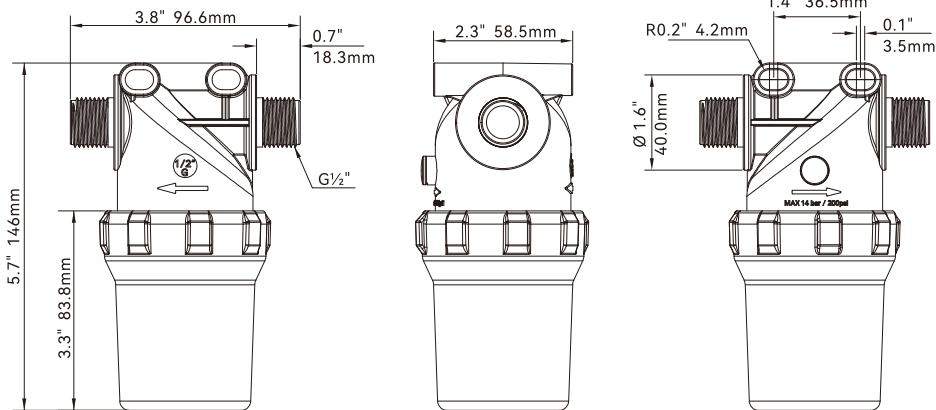
DIMENSION DRAWING



AGF001



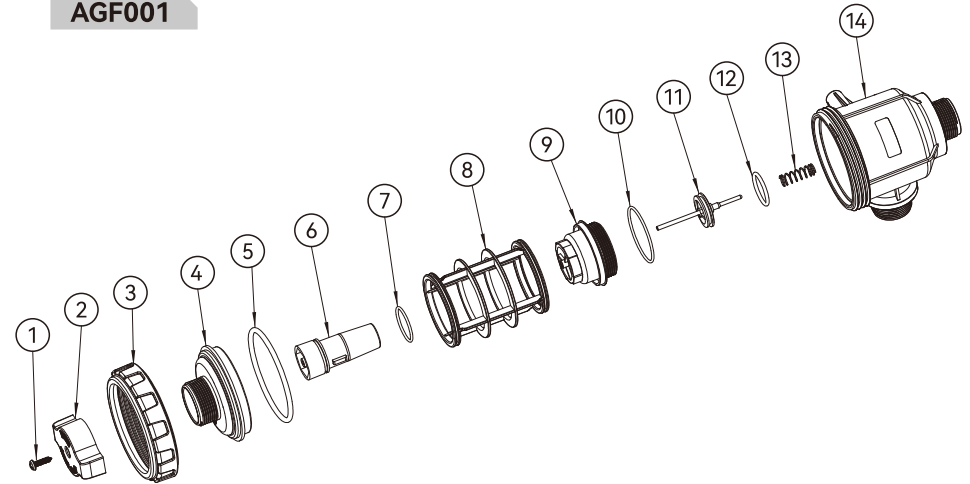
AGF002



AGF003

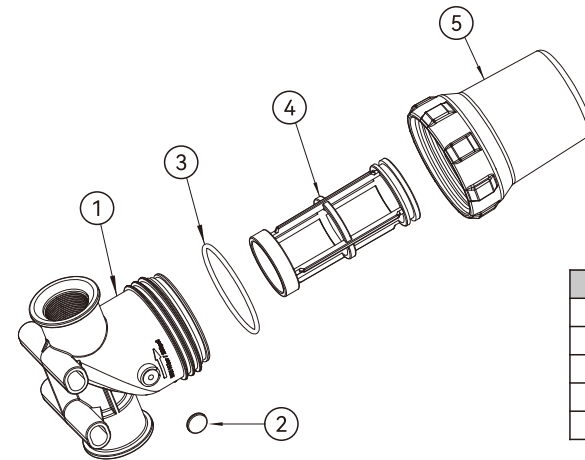
EXPLODED VIEW/PARTS LIST

AGF001



Key	Description	Key	Description	Key	Description
1	Screw	6	Handle post	11	movable valve
2	Handle cover	7	Handle post O-ring	12	O-ring of movable valve
3	Screw cap	8	Strainer	13	Spring of movable valve
4	Top cover	9	Inner rotary cover	14	Lower shell
5	Seal ring	10	Seal ring of inner rotary cover		

AGF002



Key	Description
1	Top cover
2	Filter specification label
3	Seal ring
4	Filter
5	Lower shell